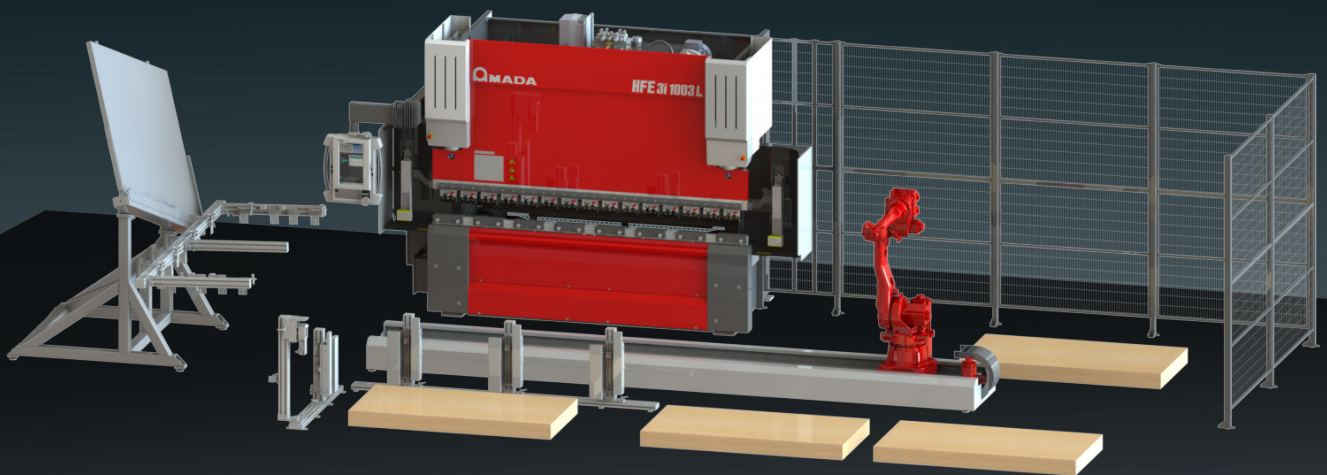


SOLUTION

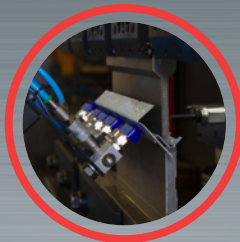
BENDING



ABS-R



AUTOMATIC BENDING SYSTEM - RETROFITTABLE



AMADA®

ABS-R

AUTOMATIC BENDING SYSTEM - RETROFITTABLE

HFE3i | HFE-M2 | HD-NT | HFP-NT

CONFIGURABLE AND MODULAR SOLUTION FOR AUTOMATIC BENDING PROCESS

ABS-R is a scalable and modular solution for reliability and simplicity based on a six axis robot and an auxiliary linear axis. The customized configuration is realized and specifically designed on customer's own production, being therefore able to grow with customer's needs.

It can combines different robot payload with HFE3i, HFE-M2, HD-NT & HFP-NT press-brakes.

ABS-R has been designed to assure maximum flexibility and the optimization of the cycle time, thus providing maximum level performances with a competitive price.

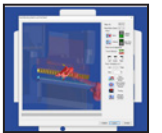
HIGH FLEXIBILITY & MODULARITY

MANUAL & ROBOT MODE

It is possible to switch from automatic operation (with robot) to the manual operation of the press brake (with operator) in a totally safe and simple way.

ABS-R BENDING SOFTWARE

The ABS-R bending software allows easy offline programming of bending sequence, tool setup and all cycle phases. The optimal robot trajectories and press brake program are generated automatically and it's possible to check the simulation. Programs are opened from robot and press brake through AMADA database.



CUSTOMIZED SOLUTIONS

ABS-R can satisfy customer's needs by developing customized solutions or adding cell devices.

It is possible to integrate unloading devices (e.g. conveyors, pallet changers), automatic loading devices, automatic gripper changers and special grippers.

In addition customized cycles can be implemented.

The integration with several models of press brakes (from 1.2 up to 4m), the customization of the cell layout as well as the retrofit installation with an existing press, offer a really wide range of application.



ABS-R SYSTEM CONFIGURATION

ROBOT & PRESS BRAKE

Different types of robot with different payload are available in combination with HFE3i, HFE-M2, HD-NT and HFP-NT press brakes. ABS-R solution can be provided as a complete new system or as a retrofit for existing Press Brake.



CENTERING STATION & REGRIPPING STATION

Centering Station conveys the part in a "reference position". Regripping is used to allow robot gripping the part in a different position.



DOUBLE SHEET DETECTOR

It ensures the picking of a single sheet after loading phase. In case of double parts, robot can drop off parts in a specific area and start with a new cycle.

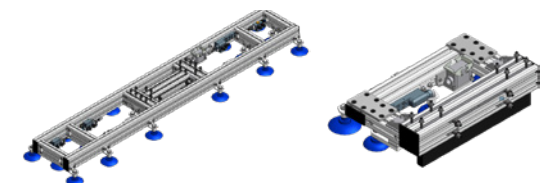


LOADING AREA

Designed for pallet loading, which can be fit with one or more stacks (maximum 6 stacks). It is equipped with magnets, air blow and brushes* for effective sheet separation.
*option

GRIPPERS

Grippers are studied according to customer's parts and specifications to allow the best and fastest handling.

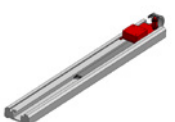


SAFETY FENCES

They can be configured with different number and type of gates according to customer's layout and specification.

AUXILIARY AXIS

Linear track's length is modular and available in steps of two meters (4m, 6m, 8m... up to 24m).



UNLOADING AREA

It's possible to manage several unloading areas (pallet, basket or other customer's devices) on the basis of production requirements.

DIMENSIONS *

Unit : mm

ABS-R 50

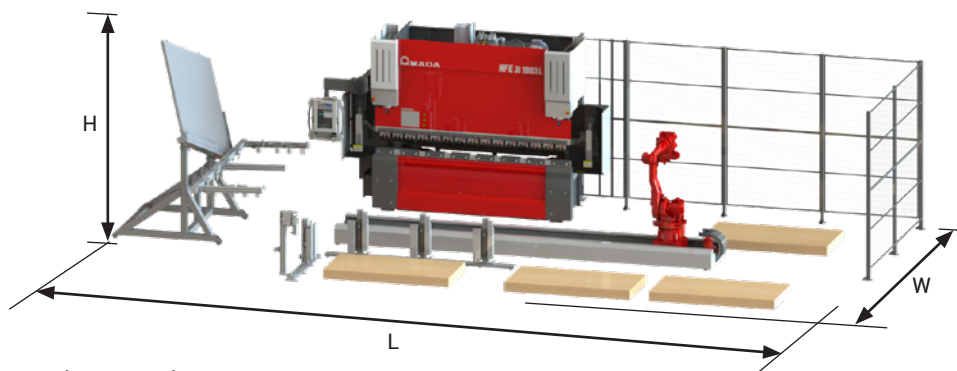
(L) 11500 x (W) 7000 x (H) 3500

ABS-R 110

(L) 12000 x (W) 7500 x (H) 3700

ABS-R 165

(L) 16500 x (W) 9500 x (H) 4000



*H dimension is referred to maximum robot extension

ABS-R SPECIFICATIONS

			ABS-R 50	ABS-R 110	ABS-R 165
Axes composition			6 axes + 1 travel axis		
Part specification*	Payload (including gripper)		kg	50	110
	Panel	Workpiece size	mm	2000 x 1000	3500 x 1000
		Max. workpiece mass	kg	23	30
	Rib	Workpiece size	mm	3000 x 500	4000 x 700
		Max. workpiece mass	kg	11	20
Travel axis	Stroke length		m	From 6 up to 24	From 8 up to 24
Loading	Number of position			Configurable, automatic loading option	
	Number of stack			Max. 6 (for each Loading area)	
	Stacking height		mm	500 (possible to customize)	
Unloading	Number of position			Configurable, conveyor and pallet changer option	
	Unloading method			horizontal and vertical	

*Parts dimensions are not binding and could be increased (to be confirmed with feasibility study)

Other robot sizes are available on request

Specifications, appearance, and equipments are subject to change without notice by reason of improvement.



For your safe use

Be sure to read the user manual carefully before use.

When using this product, appropriate personal protection equipment must be used.

The use of this product requires appropriate risk prevention measures depending on the type of work to be performed. The safety devices recommended by AMADA are supplied as standard for proper use with regard to EC conformity.

Hazard prevention measures are removed in the photos used in this catalogue.

AMADA UK LTD.

Spennells Valley Road,
Kidderminster,
Worcestershire DY10 1XS
United Kingdom
Tel: +44 (0)1562 749500
Fax: +44 (0)1562 749510
www.amada.co.uk

AMADA SA

Paris Nord II
96, avenue de la Pyramide
93290 Tremblay en France
France
Tél : +33 (0)1 49 90 30 00
Fax : +33 (0)1 49 90 31 99
www.amada.fr

AMADA GmbH

Amada Allee 1
42781 Haan
Germany
Tel: +49 (0)2104 2126-0
Fax: +49 (0)2104 2126-999
www.amada.de

AMADA ITALIA S.r.l.

Via Amada I., 1/3
29010 Pontenure
(Piacenza)
Italia
Tel: +39 (0)523 872111
Fax: +39 (0)523 872101
www.amada.it

