



SOLUTION

EGB 1303 ATC *e*

CHASE YOUR DREAMS,
NOT YOUR TOOLING



EGB 1303 ATC

CHASE YOUR DREAMS, NOT YOUR TOOLING

THE EASIEST YET PRODUCTIVE PRESS BRAKE

A common limiting factor for factories in Europe is a severe skills shortage within press brake operation. The EGB-ATCe responds to this market need. The AMADA EGB-ATCe is our easiest ever press brake to operate thanks to its dual HMI display with augmented reality, 3-finger backgauge, automatic angle measurement, automated tool change, our latest AMNC 4ie controller with voice control and VPSS 4ie offline programming.

The new EGB-ATCe is a fully electric press brake equipped with an asymmetric dynamic crowning device that allows the operator to bend at any point along the beam, with consistent and accurate results. The servo technology also reduces maintenance and machine downtime.



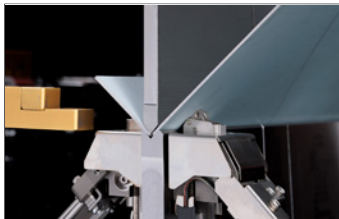
Photograph may include optional equipment

KEY FEATURE UPGRADES



Ease of use

The EGB-ATCe is equipped with our most productive features to automate all the operations and consequently to de-skill the processes, thanks to the Automatic Tool Changer (ATC), the dynamic crowning, the bending indicator and the Smart Operation Pack.



Right first time

Solutions such as the new dynamic asymmetric crowning and the Bi-S II bend indicator automatically adjust the bend angle and linearity to easily manage the production of a single part.



Ready for rush jobs

Rush jobs are no longer an issue with the Automatic Tool Changer (ATC), which can change tooling in a matter of minutes.

AMTS BENDING TOOLS



AUTOMATIC TOOL CHANGER (ATC BENEFITS)

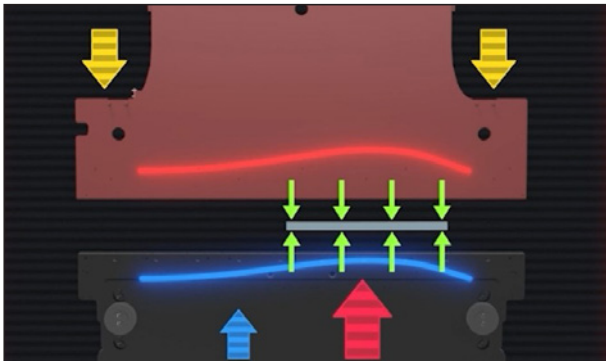
- Load the most complex tool setups within minutes
- Ideal solution for variable lot sizes and the seamless introduction of rush jobs

AMTS TOOLING

AMADA's Modular Tooling System (AMTS) is designed to account for the motion during loading and unloading as well as accurate punch tip alignment. The design of the AMTS tooling is an important factor as to why the ATC loads the most complex tools setups in minutes and reduces setup times for longer parts.

EGB 1303 ATC

CROWNING SYSTEM AND ECO DRIVE SYSTEMS



NEW SERVO-CROWNING

The EGB-e series is equipped with the new dynamic asymmetrical auto-crowning device that can apply different compensation from left to right when bending in an offset position.



ECO POTENTIAL

AMADA is committed to protecting the environment, which is why the EGB-e series is completely oil-free and automatically turns off the control panel and LED lights when the operator walks away from the operating area.

ANGLE CONTROL AND ANGLE MEASURING SYSTEMS



Digipro

The AMADA Digipro is a highly-accurate, electronic angle measuring device that transmits the measured angle wirelessly to the press brake's NC.

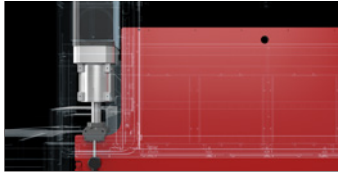
The program is then automatically corrected as required, providing a precise bend angle.



Bi-S II, Force Control and Thickness Detection System

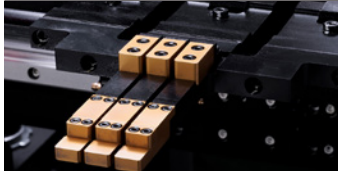
Force Control (FC) and Thickness Detection System (TDS) provide precision and high bend repeatability. In addition, the new Bi-S II bend indicator for in-cycle angle adjustments is up to 85% faster than the previous model.

STANDARD EQUIPMENT AND FUNCTIONS



All-electric drive

The EGB-e series is all-electric for high speed, accuracy and repeatability. This oil-free solution reduces the maintenance at minimum and reflects the AMADA's commitment to protecting the environment.



3-finger backgauge

The new backgauge, as part of the Smart Operation Pack, is specially designed for the EGB-e series, and uses three completely independent fingers to assist the operator during the gauging phase. The third finger can also be used for lateral positioning.



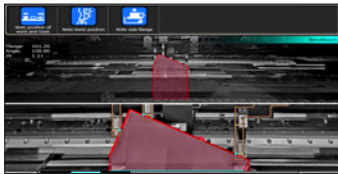
AMNC 4ie

The machine is equipped with the new AMNC 4ie numerical control, designed for less experienced or new operators. It is packed with features that simplify and speed up every operation.



Tablet HMI function

The Tablet HMI linked to a range of optional devices supports bending operations. The display automatically adapts to the work situation, providing auxiliary information for processing right in front of the operator such as the processing guidance, backgauge monitor, final angle of the bend indicator and 3D simulation.



Backgauge monitoring camera

The camera, installed inside the press brake, captures the real-time image of the backgauge and uses AR technology to imprint the theoretical gauging position, helping the operator even when tools block the view.



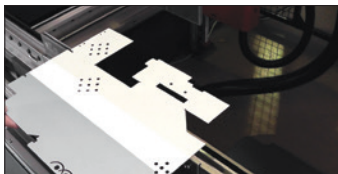
Auto-slide foot pedal

The pedal moves according to the operator's position to avoid manual repositioning, improving ergonomics and saving time.



Increased open height

The EGB-ATCe has an increased open height compared to the previous model, to give further flexibility to bending process.



LED lights (front and rear)

LED lights are installed on each side of the upper beam to increase visibility of the working area.



AMTS III

The Amada Modular Tooling System (AMTS) is the standard solution for both the top and bottom tools. It is an automatic hydraulic holder, compatible with the Wila tools type, and essential for the Automatic Tool Changer (ATC).



Die holder cleaning

Integrated and automatic die holder cleaning guarantees a totally automatic tool changing solution.

EGB 1303 ATC

STANDARD EQUIPMENT AND FUNCTIONS



Handwheel

- Easy adjustment of all axes
- Simple and flexible manual adjustments



Bar code and QR code* reader

- Built-in in the numerical control
- Eliminates program search time and errors
- It can scan paper or the code marked on the part to be processed



Automatic safety shutter

The front shutter is a safety device that protects the operator during the automatic tool change and is automatic for both opening and closing.



AS-01

AMADA designed the AS-01 laser safety device to prevent hazards during bending and without affecting workability. The device has a compact body and is easy to use, with a minimum mute point of 2mm.

* QR Code is the trademark of DENSO WAVE

OPTIONAL EQUIPMENT AND FUNCTIONS



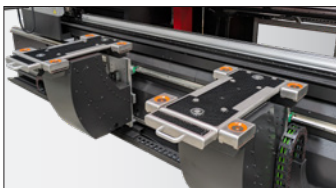
Bi-S II 2-axes

This solution consists of two pairs of Bi-S II units capable of simultaneously measuring the bend angle at two or three different points. Particularly suitable for frequent long bends.



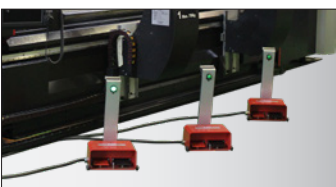
Front suport arms

Movable front workpiece support.



Sheet follower

- Improves accuracy and safety
- Assists operator for handling of large and heavy parts
- Eliminates the need for a second operator



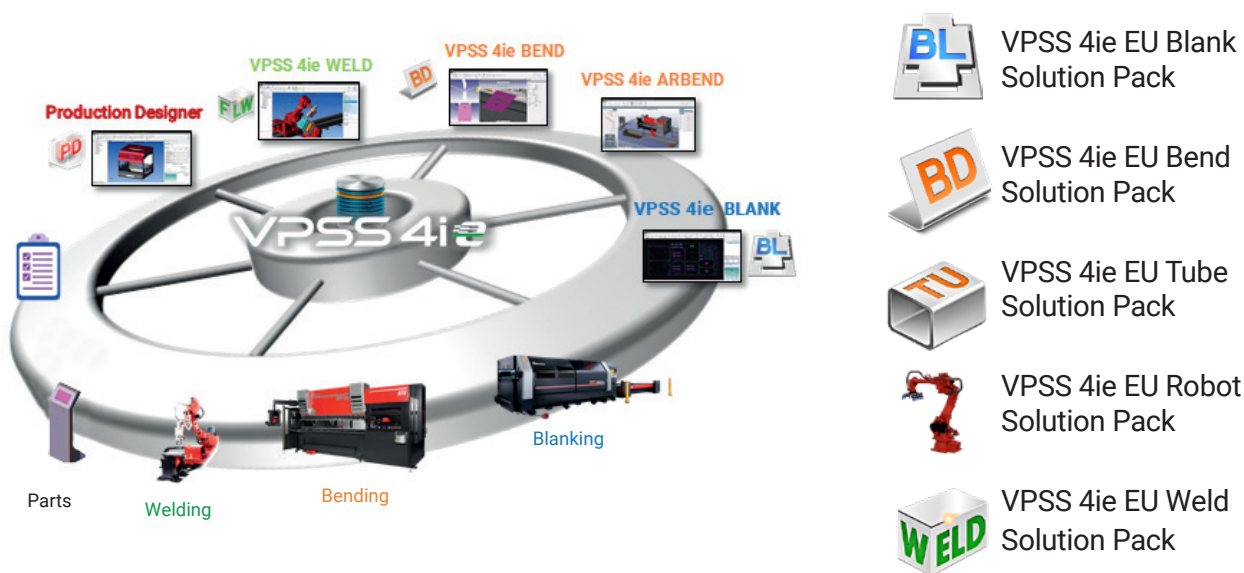
3rd footpedal

- Improves ergonomics and safety of the operator
- Easier bending process by multi station set-up

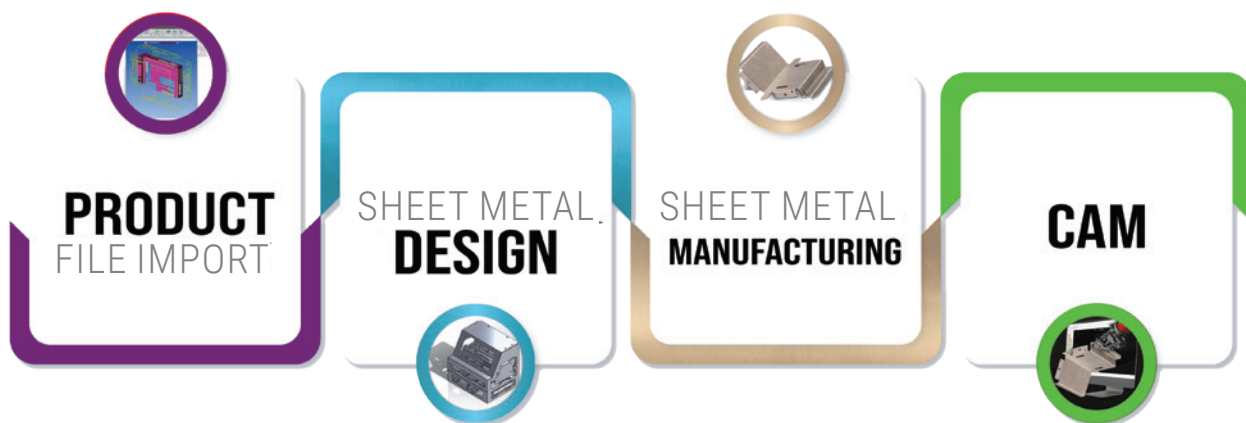
ADVANCED SHEET METAL ENGINEERING SYSTEM

AMADA strongly believes that innovative software is the core of productive sheet metal processing. With decades of experience in the sheet metal industry and by working together with our customers, we have developed easy to use software solutions designed to meet the industry requirements. AMADA software solutions increase customer productivity through integrated development with AMADA machines and an emphasis on virtual prototyping and simulation systems.

Our VPSS 4ie CAD/CAM software helps you virtually simulate the production process, identify potential issues and make adjustments before manufacturing. With our solutions, you can maximise quality and increase efficiency whilst minimising waste. The fully automated and optimised software can also be used by less experienced operators.

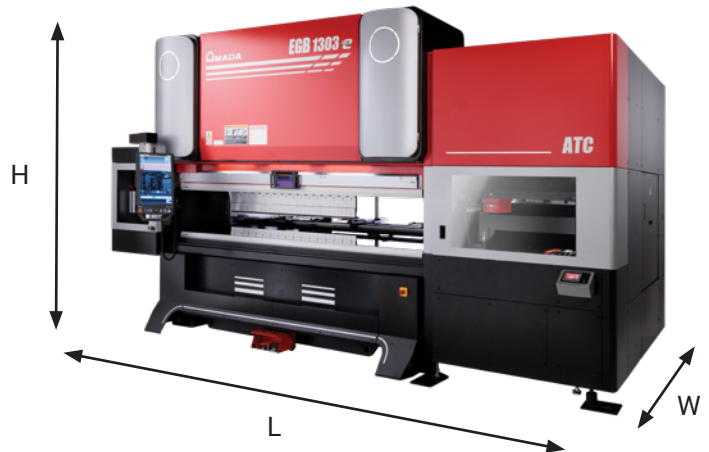


VPSS 4ie Suite, from design to production-ready in four simple steps



MACHINE DIMENSIONS

EGB-1303 ATCe		
Dimensions (L x W x H)	mm	5740 x 2484 x 3120
Machine mass	kg	13400



MACHINE SPECIFICATIONS

EGB-1303 ATCe		
Numerical Control		AMNC 4ie
Press Capacity	kN	1300
Max bending length	mm	3110
Distance between frames	mm	2700
Open height	mm	620
Stroke	mm	250
C-throat	mm	450
Oil capacity	l	0*
Approach speed	mm/s	250
Bending speed	mm/s	25
Return speed	mm/s	250
Num. of Axis		12

*except for AMTS III clamping system

ATC SPECIFICATIONS

EGB-1303 ATCe	
Tool holder	AMTS III
Number of punch stockers (max optional)	15 (18)
Number of die stockers (max optional)	18 (25)

Specifications, appearance and equipment are subject to vary without notice by reason of improvement or regional requirement.



For Your Safe Use

Be sure to read the operator's manual carefully before use.

When using this product, appropriate personal protection equipment must be used.

The official model name of machine described in this catalogue is EGB1303AE. Use the registered model name when you contact the authorities for applying for installation, exporting, or financing. The hyphenated spelling EGB-ATCe is used in some portions of this catalogue for ease of readability. Hazard prevention measures are removed in the photos used in this catalogue.

AMADA UK LTD.

Spennells Valley Road,
Kidderminster,
Worcestershire DY10 1XS
United Kingdom
Tel: +44 (0)1562 749500
Fax: +44 (0)1562 749510
www.amada.co.uk

AMADA SA

Paris Nord II
96, avenue de la Pyramide
93290 Tremblay en France
France
Tél : +33 (0)1 49 90 30 00
Fax : +33 (0)1 49 90 31 99
www.amada.fr

AMADA GmbH

AMADA Allee 1
42781 Haan
Germany
Tel: +49 (0)2104 2126-0
Fax: +49 (0)2104 2126-999
www.amada.de

AMADA ITALIA S.r.l.

Via AMADA I., 1/3
29010 Pontenure
(Piacenza)
Italia
Tel: +39 (0)523 872111
Fax: +39 (0)523 872101
www.amada.it

