



SOLUTION

EGB 6013 ARc

SMARTER, FASTER ROBOTIC PRODUCTION



EGB 6013 ARc

SMARTER, FASTER ROBOTIC PRODUCTION

SMART IN PRODUCTION OF SMALL AND COMPLEX COMPONENTS

The new EGB-6013ARce robotic bending cell is the natural evolution of the EG-6013AR.

Equipped with the new EGB-6013e servo-electric bending press brake, this new bending cell specialises in the production of small, complex components, but with the ability to produce parts up to 550x300mm.

The perfect solution to increase the production output of difficult-to-produce parts.

The easy effective operation of the robotic cell gives maximum production output with minimum operator input. By using the smart functions such as Tablet HMI and automated teaching, the need for a skilled operator is removed.

In addition faster part handling, an increased tool library, greater loading capacity and a larger range of grippers give increased flexibility to this machine.



Photograph includes optional equipment

KEY FEATURES



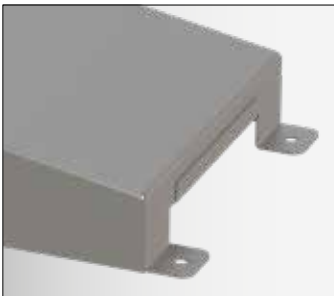
Higher productivity

Increased loading capacity with the possibility of loading parts while the cell performs production, all with optimised cycle time.



Increased tool capacity

Increased capacity of the Automatic Tool Changer (ATC) by 35%, to improve the flexibility and enlarge the range of parts to produce.



Enhanced operations

Increased range of part for both smallest and biggest size, +35% of tooling range on press brake, now with the possibility to process hemming and offset bends.



De-skilled operation

The new features, such as the table HMI and Automatic teaching mode, allow any person to master the EGB-6013ARce for maximum performance levels.



AMNC 4ie + VPSS 4ie ARBEND

The new numerical control AMNC 4ie schedules the production of parts automatically programmed by VPSS 4ie ARBEND.

The programs are optimised for handling movements for the shortest cycle time. Easy and friendly even for operators new to bending.

DIMENSIONS



MACHINE SPECIFICATIONS

Press brake specification	EGB-6013ARce
Press capacity	600 kN
Press beam length (effective)	1350 mm (1160 mm)
Open height & stroke	585 / 150
Approach/ Bending/ Return speed	250 / 25 / 250 mm/sec
X-axis stroke (delta X)	250
ATC stockers (total length)	9 (9.585 m)

Processing parts	
Thickness range	0.5 / 6.0 mm
Minimum part size	30 x 80 mm
Maximum part size (based on thickness)	t2.5 mm - 400 x 400 or 550 x 300 t4.5 mm - 300 x 300 t6.0 mm - 250 x 250

Robot specification	EGB-6013ARce
Robot payload	10 kg
Travel axis	3.2 m
Max AGC capacity	8
Loading area	3 by 550x400 mm - max. 6 stacks by 300 mm
Unloading device	Double layer conveyor
Dimensions including safety fence (L x W x H)	4620 x 3865 x 2630 mm

Specifications, appearance and equipment are subject to change without notice by reason of improvement.



For Your Safe Use
Be sure to read the operator's manual carefully before use.
When using this product, appropriate personal protection equipment must be used.

The official model name of machine described in this catalogue is EGB AR. Use the registered model name when you contact the authorities for applying for installation, exporting, or financing.
Hazard prevention measures are removed in the photos used in this catalogue.

AMADA UK LTD.

Spennells Valley Road,
Kidderminster,
Worcestershire DY10 1XS
United Kingdom
Tel: +44 (0)1562 749500
Fax: +44 (0)1562 749510
www.amada.co.uk

AMADA SA

Paris Nord II
96, avenue de la Pyramide
93290 Tremblay en France
France
Tél: +33 (0)149903000
Fax: +33 (0)149903199
www.amada.fr

AMADA GmbH

Amada Allee 1
42781 Haan
Germany
Tel: +49 (0)2104 2126-0
Fax: +49 (0)2104 2126-999
www.amada.de

AMADA ITALIA S.r.l.

Via Amada I., 1/3
29010 Pontenure
(Piacenza)
Italia
Tel: +39 0523 872111
Fax: +39 0523 872101
www.amada.it

