



SOLUTION

EGB **SERIES**

ELECTRIFYING PERFORMANCE



ELECTRIFYING PERFORMANCE

NEW SERVO PRESS BRAKE WITH SERVO CROWNING

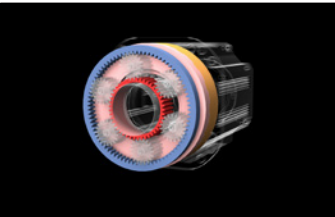
Experience the future of bending technology with the servo-electronic EGB-e series, designed for maximum productivity and precision even for non-skilled operators. AMADA's innovative solutions support operators at every stage, from automatic offline programming to tool setup guidance with laser, gauging position by a 360° AR camera and 3-finger backgauge for an easy and accurate process. The EGB-e series includes the new AMNC 4ie numerical control, offering faster performance and a larger display, along with features like automatic operator recognition, voice command capabilities, and an idle stop function to reduce power consumption.

EGB-e series new innovative automatic asymmetrical crowning device ensures stable, consistent accuracy at any point along the bending area. The latest in bend indicator technology, the Bi-S II is up to 85% faster than previous model whilst optimising the measuring capacity for smaller flange sizes.



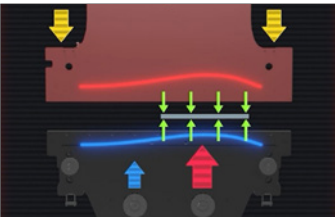
Photograph includes optional equipment

KEY FEATURE UPGRADES



Highly productive

The new EGB-e series is an all-electric press brake with extreme performance for both upper beam and backgauge. Over 20 years of experience in the development of servo-electric solutions has been concentrated in this new amazing bending machine.



Highly accurate

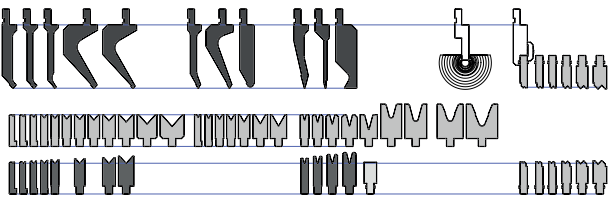
The ideal solution for exceptional results with the combination of the servoelectric technology, the new dynamic asymmetrical auto-crowning and bending indicator Bi-S II.



Easy to use

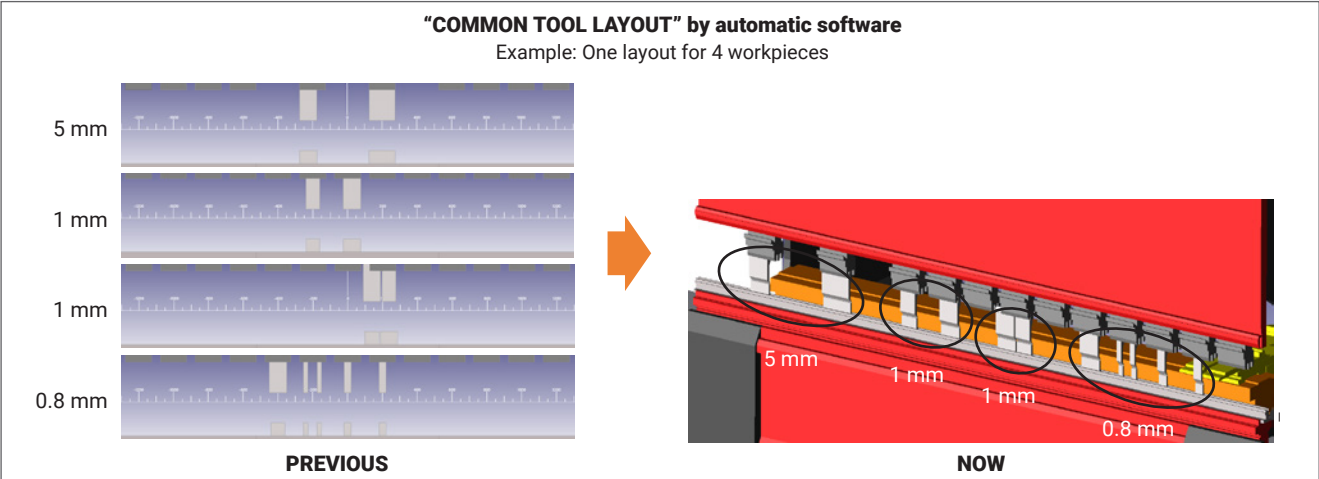
AMNC 4ie and the Smart Operation Pack are the perfect combination for a highly productive and easy-to-use bending press, designed to be easy to use even by less experienced operators.

BENDING TOOLS

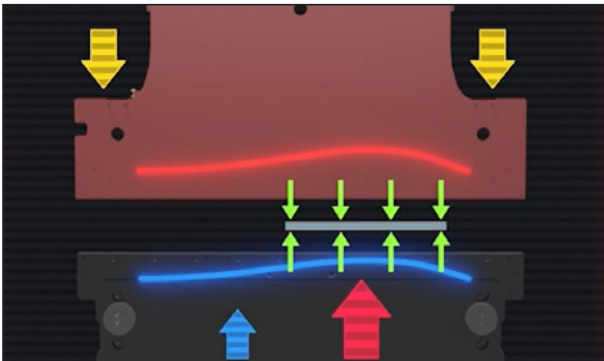


AFH & STAGED BEND TOOL

AMADA Fixed Height and Staged Bending tools are the best solution to minimise set-up operations.



CROWNING SYSTEM AND ECO DRIVE SYSTEMS



NEW SERVO-CROWNING

The EGBe series is equipped with the new dynamic asymmetrical auto-crowning device that can apply different compensation from left to right when bending in an offset position.



ECO POTENTIAL

AMADA is committed to protecting the environment, which is why the EGBe series is completely oil-free and automatically turns off the control panel and LED lights when the operator walks away from the operating area.

ANGLE CONTROL AND ANGLE MEASURING SYSTEMS



Digipro

The AMADA Digipro is a highly-accurate, electronic angle measuring device that transmits the measured angle wirelessly to the press brake's NC.

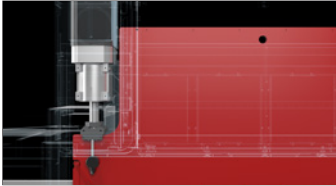
The program is then automatically corrected as required, providing a precise bend angle.



Bi-S II, Force Control and Thickness Detection System

Force Control (FC) and Thickness Detection System (TDS) provide precision and high bend repeatability. In addition, the new optional Bi-S II bend indicator for in-cycle angle adjustments is up to 85% faster than the previous model.

STANDARD EQUIPMENT AND FUNCTIONS



All-electric drive

The EGB-e series is all-electric for high speed, accuracy and repeatability. This oil-free solution reduces maintenance and reflects the AMADA's commitment to protecting the environment.



6-axes backgauge

The new 6-axes backgauge is much faster than the previous model and also features Tool Navigation, which allows the operator to use the press brake finger to indicate the exact position to load tools.



AMNC 4ie

The machine is equipped with the new AMNC 4ie numerical control, designed for less experienced or new operators. It is packed with features that simplify and speed up every operation.



SGRIP

- Vertical tool loading
- Space between grips can be eliminated
- Manual rear plate (option)



Handwheel

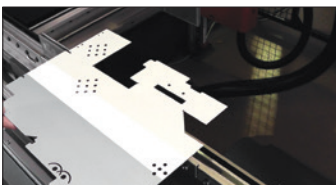
- Adjust all axis
- Easy and flexible manual adjustments



Bar code and QR code* reader

- Built-in in the numerical control
- Eliminates program search time and errors
- It can scan paper or the code marked on the part to be processed

* QR code is the trademark of DENSO WAVE



LED light (front and rear)

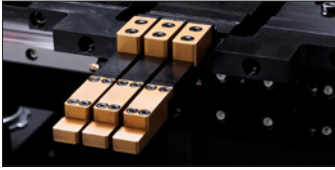
LED lights are installed on each side of the upper beam to increase visibility of the working area.



AS-01

AMADA designed the AS-01 laser safety device to prevent hazards during bending and without affecting workability. The device has a compact body and is easy to use, with a minimum mute point of 2mm.

OPTIONAL EQUIPMENT AND FUNCTIONS



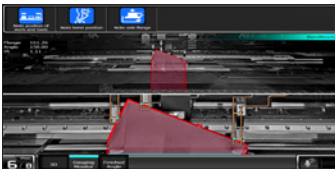
3-finger backgauge

The new backgauge, as part of the Smart Operation Pack, specially designed for the EGBe series, uses three completely independent fingers to assist the operator during the gauging phase. The third finger can also be used for lateral positioning.



Tablet HMI

The Tablet HMI linked to a range of optional devices supports bending operations. The display automatically adapts to the work situation, providing auxiliary information for processing right in front of the operator such as the Processing Guidance, backgauge monitor, Final Angle of the bend indicator and 3D simulation.



Backgauge monitoring camera

The camera, installed inside the press brake, captures the real-time image of the backgauge and uses AR technology to imprint the theoretical gauging position, helping the operator even when tools block the view.



Auto-slide foot pedal

The pedal moves according to the operator's position to avoid manual repositioning, improving ergonomics and saving time.



Delta X fingers (for 6-axes backgauge)

The Delta X finger is a useful feature when bending asymmetrical workpieces.



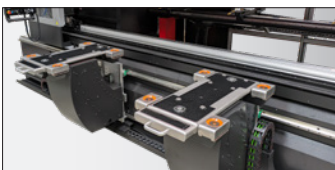
Automatic grip for WILA tool

- Vertical tool loading
- Easy setting of complicated tool layouts
- No external pipes on rear side



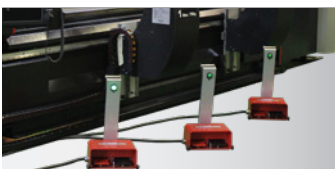
Front support

Movable front workpiece support



Sheet follower

- Improves accuracy and safety
- Assists operator for handling of large and heavy parts
- Eliminates the need for a second operator



3rd footpedal

- Improves ergonomics and safety of the operator
- Easier bending process by multi station set-up

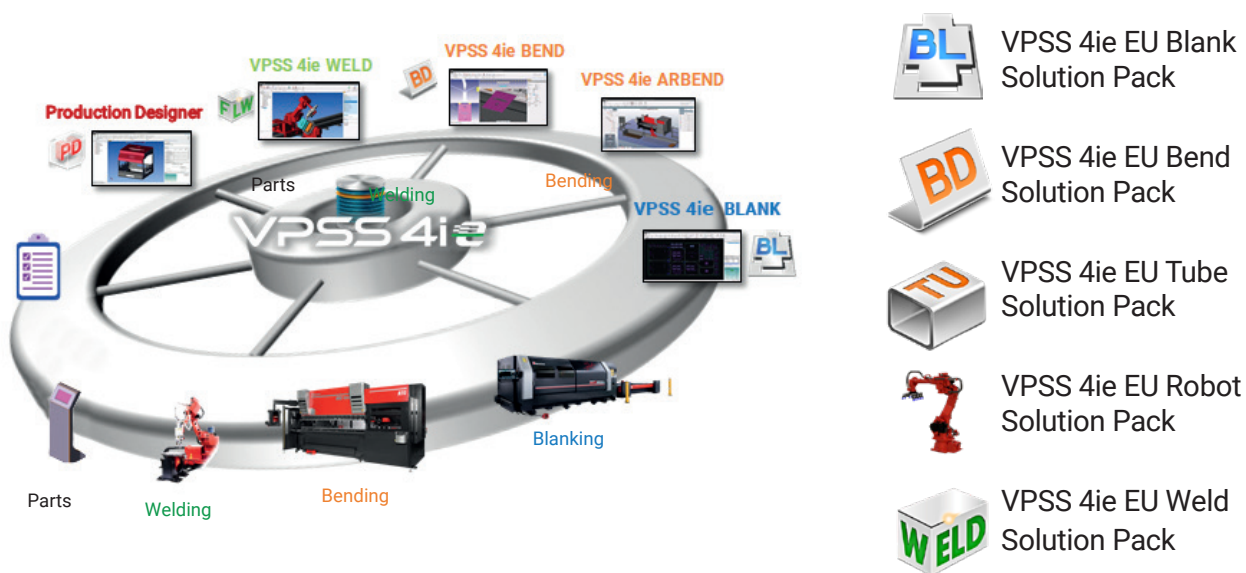
SOFTWARE

VPSS 4ie

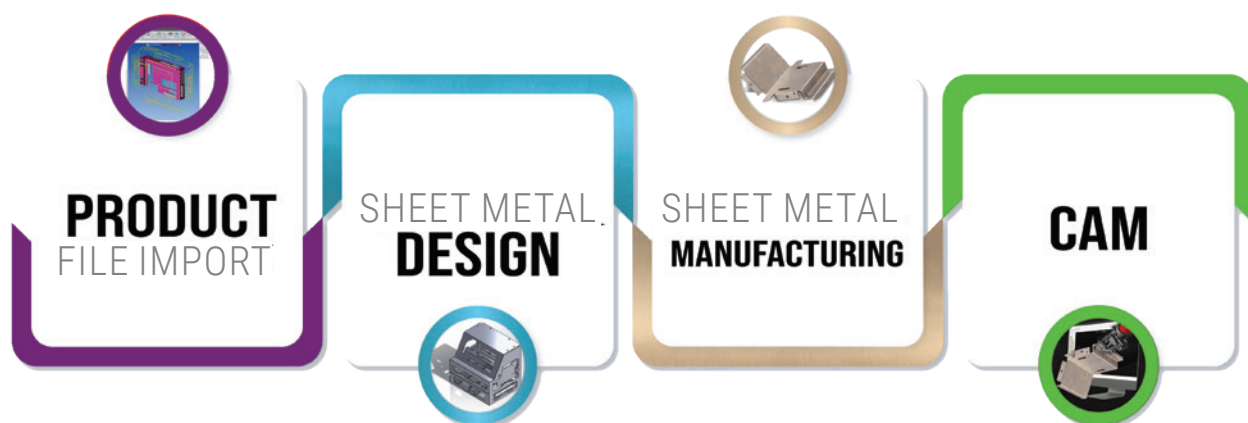
ADVANCED SHEET METAL ENGINEERING SYSTEM

AMADA strongly believes that innovative software is the core of productive sheet metal processing. With decades of experience in the sheet metal industry and by working together with our customers, we have developed easy to use software solutions designed to meet the industry requirements. AMADA software solutions increase customer productivity through integrated development with AMADA machines and an emphasis on virtual prototyping and simulation systems.

Our VPSS 4ie CAD/CAM software helps you virtually simulate the production process, identify potential issues and make adjustments before manufacturing. With our solutions, you can maximise quality and increase efficiency whilst minimising waste. The fully automated and optimised software can also be used by less experienced operators.



VPSS 4ie Suite, from design to production-ready in four simple steps



MACHINE DIMENSIONS



EGBe		6020	8025	1303
Dimensions (L x W x H)	mm	2940 x 2112 x 2762	3443 x 2144 x 2799	3980 x 2120 x 3120
Machine mass	kg	5500*	7200*	11400

* approximate weight

MACHINE SPECIFICATIONS

EGBe		6020	8025	1303
Numerical Control		AMNC 4ie		
Press Capacity	kN	600	800	1300
Max bending length	mm	2150	2600	3110
Distance between frames	mm	1700	2220	2700
Open height (high body)	mm	520 (620)		
Stroke length	mm	250		
C-throat	mm	450		
Oil capacity	l	0		
Approach Speed	mm/s	250		
Bending Speed	mm/s	25		
Return Speed	mm/s	250		
Num. of Axis	pcs	10		

Specifications, appearance and equipment are subject to change without notice by reason of improvement.



For Your Safe Use

Be sure to read the operator's manual carefully before use.

When using this product, appropriate personal protection equipment must be used.

The official model name of machine described in this catalogue is EGBe. Use the registered model name when you contact the authorities for applying for installation, exporting, or financing.

Hazard prevention measures are removed in the photos used in this catalogue.

AMADA UK LTD.

Spennells Valley Road,
Kidderminster,
Worcestershire DY10 1XS
United Kingdom
Tel: +44 (0)1562 749500
Fax: +44 (0)1562 749510
www.amada.co.uk

AMADA SA

Paris Nord II
96, avenue de la Pyramide
93290 Tremblay en France
France
Tél: +33 (0)149903000
Fax: +33 (0)149903199
www.amada.fr

AMADA GmbH

Amada Allee 1
42781 Haan
Germany
Tel: +49 (0)2104 2126-0
Fax: +49 (0)2104 2126-999
www.amada.de

AMADA ITALIA S.r.l.

Via Amada I., 1/3
29010 Pontenure
(Piacenza)
Italia
Tel: +39 0523 872111
Fax: +39 0523 872101
www.amada.it

