

SOLUTION

FLW 3000 L₂ **3kW**

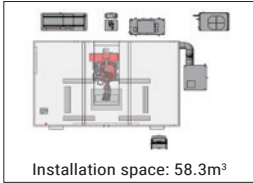
COMPACT FIBRE LASER WELDING MACHINE



FLW 3000Le 3kW

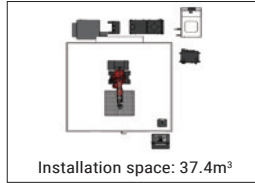
COMPACT FIBRE LASER WELDING MACHINE

Conventional robotic welder



BEFORE

FLW-3000Le

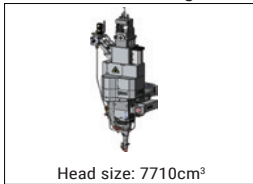


AFTER

COMPACT FOOTPRINT

Create new value for the welding process in a compact footprint. Footprint is 65% of conventional machine.

Conventional welding head



BEFORE

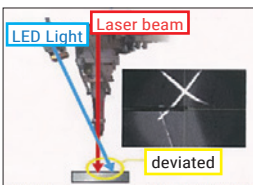
FLW-3000Le



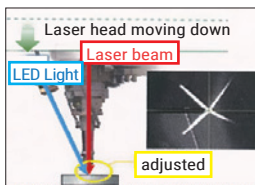
AFTER

SMALL HEAD

Head size is 37% of conventional laser head.



BEFORE



AFTER

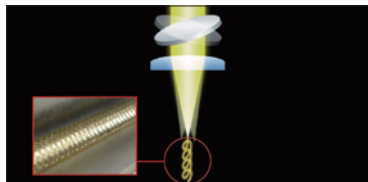
STABLE PROCESS WITH Z INDICATOR

Nozzle gap adjustment at the weld positions is done by projecting the LED light and the image of the camera in the laser head on the monitor. Processing defects caused by incorrect nozzle gap are prevented, resulting in stable process results.



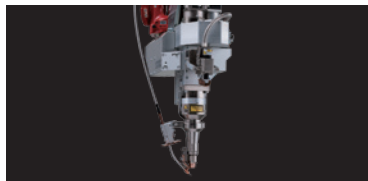
For illustrative purposes only.
Table is an option.

FLW-3000Le WELDING TECHNOLOGY



Beam weaving

The laser beam rotates during the welding operation. This enables stable high quality welding to be achieved.

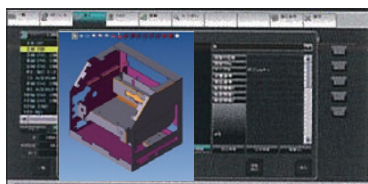


Filler wire feeding unit

Filler for larger gaps can be automatically supplied when necessary. It can be utilized in conjunction with beam weaving.

OPTION

EASY OPERATION



Set up navigation

Register jig work position and CAM pictures in the program to make setup easier.



TAS (Teaching Assist System)

Weld points can be corrected in the NC screen. No need for manual robot teaching.

Nozzle Line Up for various processes



Thin Nozzle

Purpose : Weld
Feature: standard nozzle



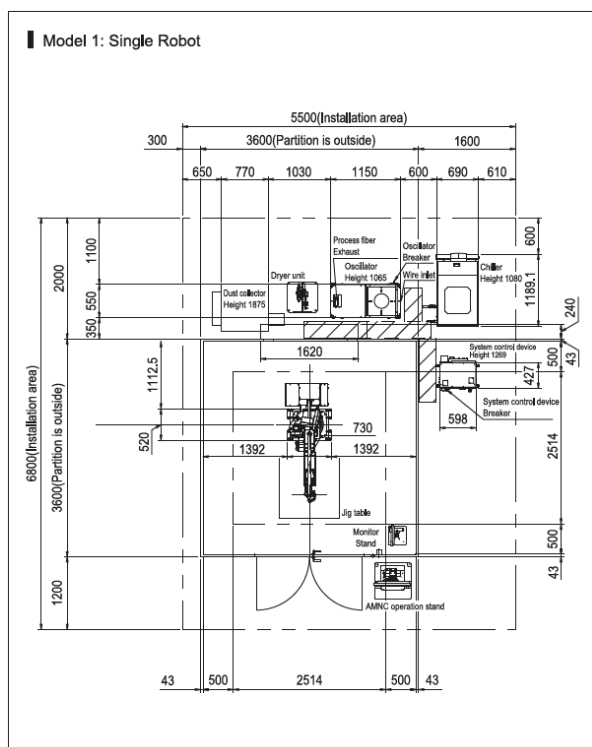
Water cooled Coaxial Nozzle

Purpose : Weld
Feature: Spatter durability

OPTION

DIMENSIONS

Unit: mm



For illustrative purposes only.
Table is an option.

MACHINE SPECIFICATIONS

| | FLW-3000Le |
|------------------|--------------------------|
| Oscillator | FL3000 |
| Chiller | Technotrans PURE60K |
| Robot | GP25 (YASKAWA) |
| Robot controller | YRC1000 (YASKAWA) |
| NC controller | AMNC4ie |
| Process head | AMADA |
| Partition | Full cover partition |
| Dust collector | Herding SIMPLEX 6-1-3 SB |

OSCILLATOR SPECIFICATION

| | | FL3000 |
|---------------------|-----|-------------------|
| Rate laser power | W | 3000 |
| Dimension W x H x L | mm | 550 x 1065 x 1490 |
| Wavelength | µm | 1.07 |
| Power requirement | kVA | 10.5 |
| Mass | kg | 346 |

Specifications, appearance, and equipment are subject to change without notice by reason of improvement.



For your safe use
Be sure to read the user manual carefully before use.
When using this product, appropriate personal protection equipment must be used.



Laser class 1 when operated in accordance to EN 60825-1

The official model name of the machines and units described in this catalogue are non-hyphenated like FLW3000Le. Use this registered model names when you contact the authorities for applying for installation, exporting, or financing. The hyphenated spellings like FLW-3000Le are used in some portions of the catalogue for sake of readability.

Hazard prevention measures are removed in the photos used in this catalogue.

AMADA UK LTD.

Spennells Valley Road,
Kidderminster,
Worcestershire DY10 1XS
United Kingdom
Tel: +44 (0)1562 749500
Fax: +44 (0)1562 749510
www.amada.co.uk

AMADA SA

Paris Nord II
96, avenue de la Pyramide
93290 Tremblay en France
France
Tél: +33 (0)149903000
Fax: +33 (0)149903199
www.amada.fr

AMADA GmbH

AMADA Allee 1
42781 Haan
Germany
Tel: +49 (0)2104 2126-0
Fax: +49 (0)2104 2126-999
www.amada.de

AMADA ITALIA S.r.l.

Via AMADA I., 1/3
29010 Pontenure
(Piacenza)
Italia
Tel: +39 0523-872111
Fax: +39 0523-872101
www.amada.it

